

Headliner Systems

KA-400 SLIMLINE.....	49
KK-400 SLIMLINE.....	51
KA-500 HARDHAT	53
KA-7100	55
KA-7300	57
KELVIN A/C.....	59
KELVIN HVAC.....	61
PASCAL A/C.....	63



Features

- Heavy-duty steel construction
- Low profile headliner mount A/C
- Durable double wheel blower
- 3-speed blower switch
- Adjustable thermostat control
- Easy access refrigerant hose connections
- (5) Directional shut-off louvers
- Optional fresh air filter package

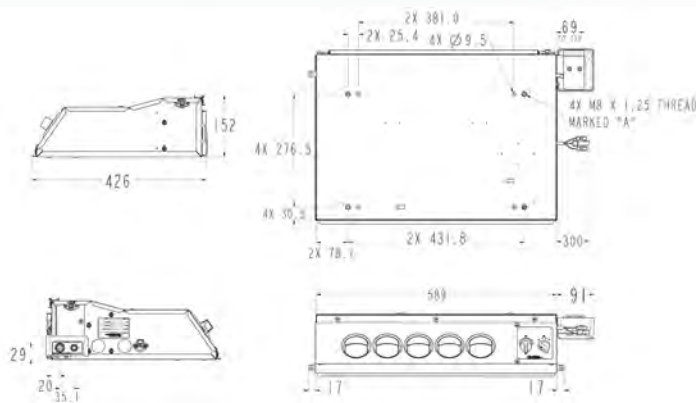
Air Distribution and Control Panel



Suggested Applications



Line Drawing



Technical Specifications

Model	KA-400 12V	KA-400 24V
Voltage	12V	24V
Power	21,838 BTU/hr (6,4 kW)	21,838 BTU/hr (6,4 kW)
Amps	10 A/h	5 A/h
Maximum air flow	280 SCFM (425 m ³ /hr)	280 SCFM (425 m ³ /hr)
Dimensions (L x W x H)	23.19in x 16.77in x 5.98in (589mm x 426mm x 152mm)	23.19in x 16.77in x 5.98in (589mm x 426mm x 152mm)
Weight	26 lbs. (11,8 kg)	26 lbs. (11,8 kg)
Mounting Position	Headliner	Headliner

Measurements are listed using the U.S. system with the metric system in parenthesis.

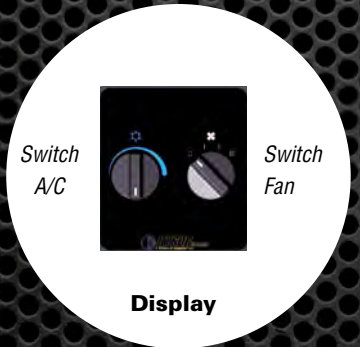
Recommended Remote Condenser: KC-500 (page 89)

Dimensions layout



Advantages

- Operator Comfort
- Perfect match for your vehicle
- Best Value
- Very durable structure
- Virtually maintenance free



KA-400 Slimline Order Guide

Part	Part Number	Notes
Unit Part Number	BSP00007AC12 BSP00007AC24	12V 24V
Installation Kit*	3475068	12V
	3475068	24V
Blower Assembly	1075056	12V
	1075057	24V
Resistor	2075006	12V
	2075008	24V
Fan Switch	2199005	12V
	2199005	24V
Filter	3475017	12V
	3475017	24V
Evaporator	1675015	12V
	B400130	24V
Expansion Valve	1899035	12V
	1899035	24V
Thermostat	2375001	12V
	2375001	24V

*Must purchase installation kit with the unit



2390 Blackhawk Rd.
PO Box 6007
Rockford, IL 61125
866.507.9773
bergstrominc.com

Warranty

- 2-year limited warranty on parts and systems



Features

- Heavy-duty steel construction
- Low profile headliner mount A/C
- Durable double wheel blower
- 3-speed blower switch
- Adjustable thermostat control
- Easy access refrigerant hose connections
- (5) Directional shut-off louvers
- Optional fresh air filter package

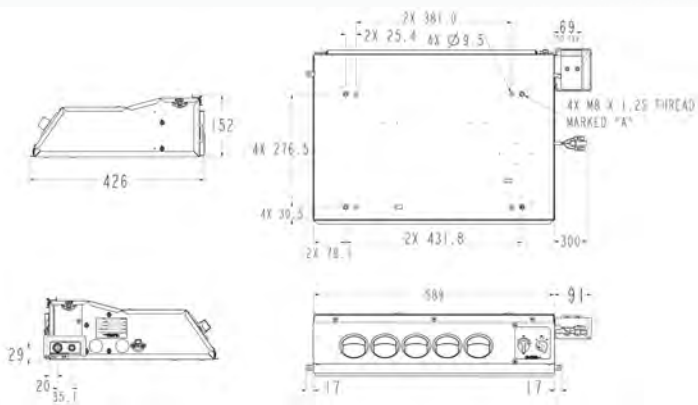
Air Distribution and Control Panel



Suggested Applications



Line Drawing



Technical Specifications

Model	KK-400 12V	KK-400 24V
Voltage	12V	24V
Power*	Cold: 21,840 BTU/hr (6,4 kW) Hot: 25,933 BTU/hr (7,6 kW)	Cold: 21,840 BTU/hr (6,4 kW) Hot: 25,933 BTU/hr (7,6 kW)
Amps**	10 A/h	5 A/h
Maximum air flow	280 SCFM (425 m ³ /hr)	280 SCFM (425 m ³ /hr)
Dimensions (W x H x D)	23.19in x 16.77in x 5.98in (589mm x 426mm x 152mm)	23.19in x 16.77in x 5.98in (589mm x 426mm x 152mm)
Weight	30 lbs. (13,6 kg)	30 lbs. (13,6 kg)
Mounting Position	Headliner	Headliner

Measurements are listed using the U.S. system with the metric system in parenthesis.

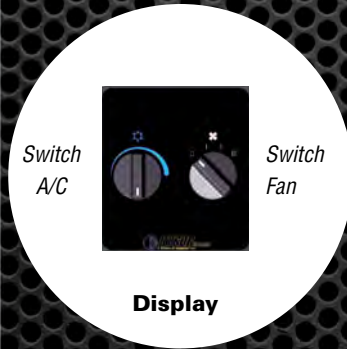
Recommended Remote Condenser is KC-500 (page 89)

Dimensions layout



Advantages

- Operator Comfort
- Perfect match for your vehicle
- Best Value
- Very durable structure
- Virtually maintenance free



KK-400 Slimline Order Guide

Part	Part Number	Notes
Unit Part Number	BSP00002HVAC12 BSP00002HVAC24	12V 24V
Installation Kit*	3475068	12V
	3475068	24V
Blower Assembly	1075056	12V
	1075057	24V
Resistor	2075006	12V
	2075008	24V
Fan Switch	2199005	12V
	2199005	24V
Filter	3475017	12V
	3475017	24V
Evaporator	1675015	12V
	1675015	24V
Expansion Valve	1899035	12V
	1899035	24V
Thermostat	2375001	12V
	2375001	24V
Heater Coil	1775013	12V
	1775013	24V
Water Valve	2475006	12V
	2475006	24V

*Must purchase installation kit with the unit



2390 Blackhawk Rd.
PO Box 6007
Rockford, IL 61125
866.507.9773
bergstrominc.com

Warranty

- 2-year limited warranty on parts and systems



Features

- Heavy-duty steel base construction
- Lightweight durable high impact cover
- (6) Directional louvers
- 3-speed blower switch
- Adjustable thermostat control
- Easy access refrigerant hose connections
- Easy access to washable recirculating air filter
- Optional fresh air filter package

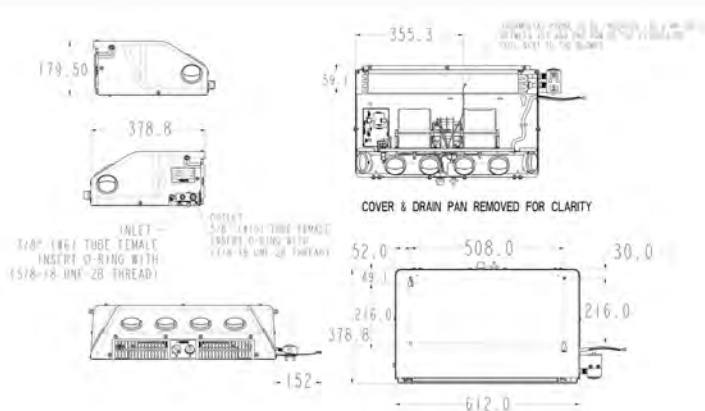
Air Distribution and Control Panel



Suggested Applications



Line Drawing



Technical Specifications

Model	KA-500 12V	KA-500 24V
Voltage	12V	24V
Power	29,345 BTU/hr (8,6 kW)	29,345 BTU/hr (8,6 kW)
Amps	13.3 A/h	7.2 A/h
Maximum air flow	305 SCFM (518 m ³ /hr)	305 SCFM (518 m ³ /hr)
Dimensions (L x W x H)	14.91in x 24.09in x 7.07in (378.8mm x 612mm x 179.5mm)	24.09in x 14.91in x 7.07in (612mm x 378.8mm x 179.5mm)
Weight	35.1 lbs. (15,9 kg)	35.1 lbs. (15,9 kg)
Mounting Position	Headliner	Headliner

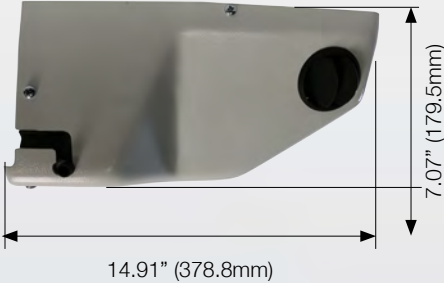
Measurements are listed using the U.S. system with the metric system in parenthesis.

Recommended Remote Condensers: KC-110 (page 85), KC-440 (page 87), KC-750 (page 91) or KC-1010 (page 97)

Dimensions layout



24.09" (612mm)



Advantages

- Operator Comfort
- Very durable structure
- Low profile headliner mount

KA-500 Hardhat Order Guide

Part	Part Number	Notes
Unit Part Number	BSP00035AC12 BSP00035AC24	12V 24V
Installation Kit*	3475067	12V
	3475067	24V
Blower Motor	1075044	12V
	304979	24V
Resistor	2075006	12V
	2075008	24V
Thermostat	2375001	12V
	2375001	24V
Evaporator	1675026	12V
	1675026	24V
Fan Switch	2199005	12V
	2199005	24V
Recirculating Filter	3175011	12V
	3175011	24V
Fresh Air Filter	3175002	12V
	3175002	24V
Expansion Valve	1899035	12V
	1899035	24V

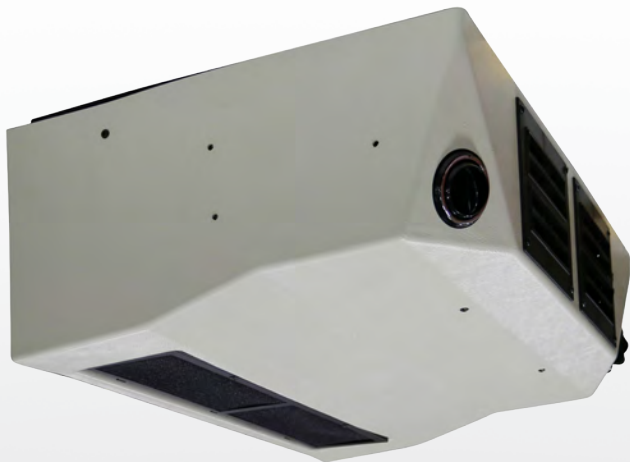
*Must order kit when ordering a unit



2390 Blackhawk Rd.
PO Box 6007
Rockford, IL 61125
866.507.9773
bergstrominc.com

Warranty

- 2-year limited warranty on parts and systems



Features

- Heavy-duty steel construction
- 3-speed double blower package
- Durable plastic cover
- Adjustable thermostat control
- (2) Dual opening large capacity shut-off louvers
- (2) Directional louvers
- Heavy-duty headliner A/C
- Recirculating air filter - easily accessible & washable

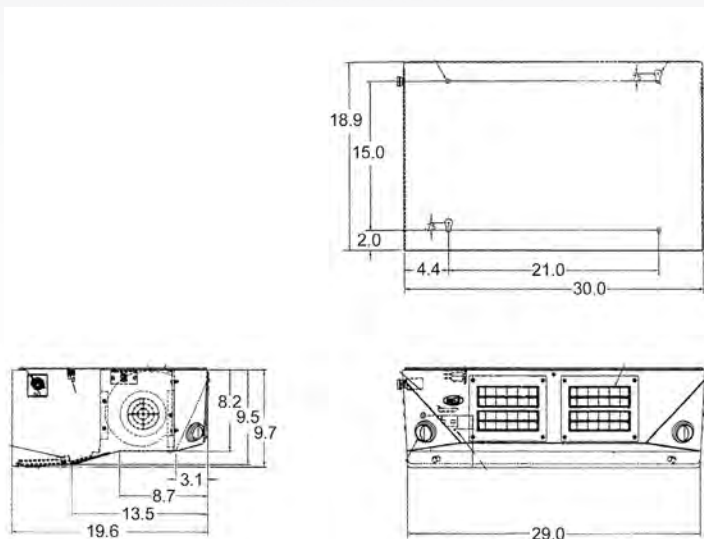
Air Distribution Panel



Suggested Applications



Line Drawing



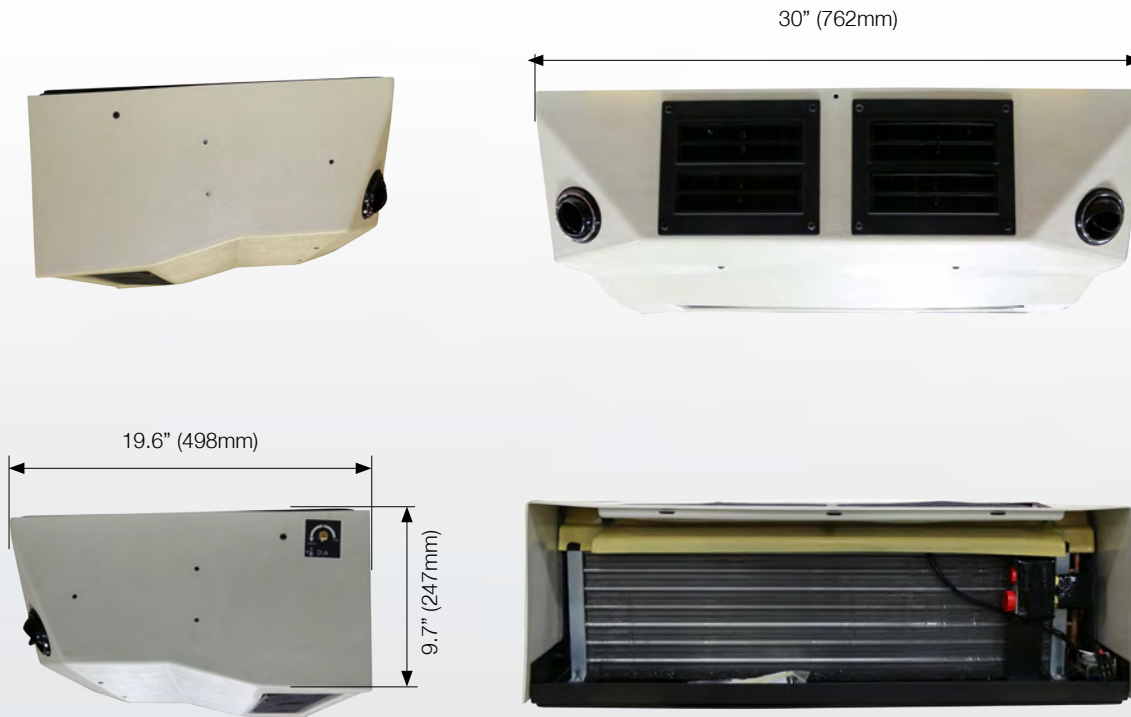
Technical Specifications

Model	KA-7100 12V
Voltage	12V
Power	49,500 BTU/hr (14,5 kW)
Amps	16.2 A/h
Maximum air flow	550 SCFM (935 m ³ /hr)
Dimensions (L x W x H)	30.0in x 19.6in x 9.7in (762mm x 498mm x 247mm)
Weight	35.1 lbs. (15,9 kg)
Mounting Position	Headliner

Measurements are listed using the U.S. system with the metric system in parenthesis.

Recommended Remote Condenser: KC-800 (page 93)

Dimensions layout



Advantages

- Operator Comfort
- Perfect match for your vehicle
- Best Value
- Very durable structure

KA-7100 Order Guide

Part	Part Number	Notes
Unit Part Number	BSP00037AC12	12V
Blower Motor	1075018	12V
Resistor	2099006	12V
Thermostat	2375001	12V
Evaporator	1675020	12V
Filter	3475019	12V
Expansion Valve	1817001	12V
Wiring Kit	3475060	
Universal Hose Kit	3475087	



2390 Blackhawk Rd.
 PO Box 6007
 Rockford, IL 61125
 866.507.9773
 bergstrominc.com

Warranty

- 2-year limited warranty on parts and systems



Features

- Heavy-duty steel construction
- (2) 3-speed double blower package
- Adjustable thermostat control
- (2) Dual opening large capacity shut-off louvers (?)
- (4) Directional louvers
- Heavy-duty headliner A/C
- Recirculating air filter - easily accessible & washable

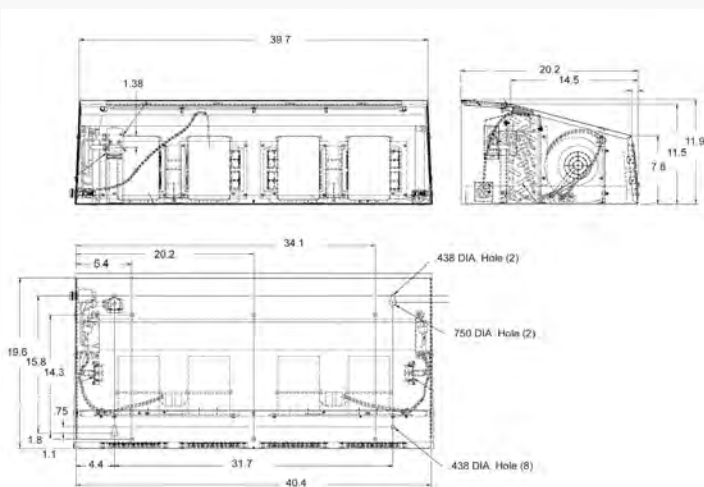
Air Distribution Panel



Suggested Applications



Line Drawing



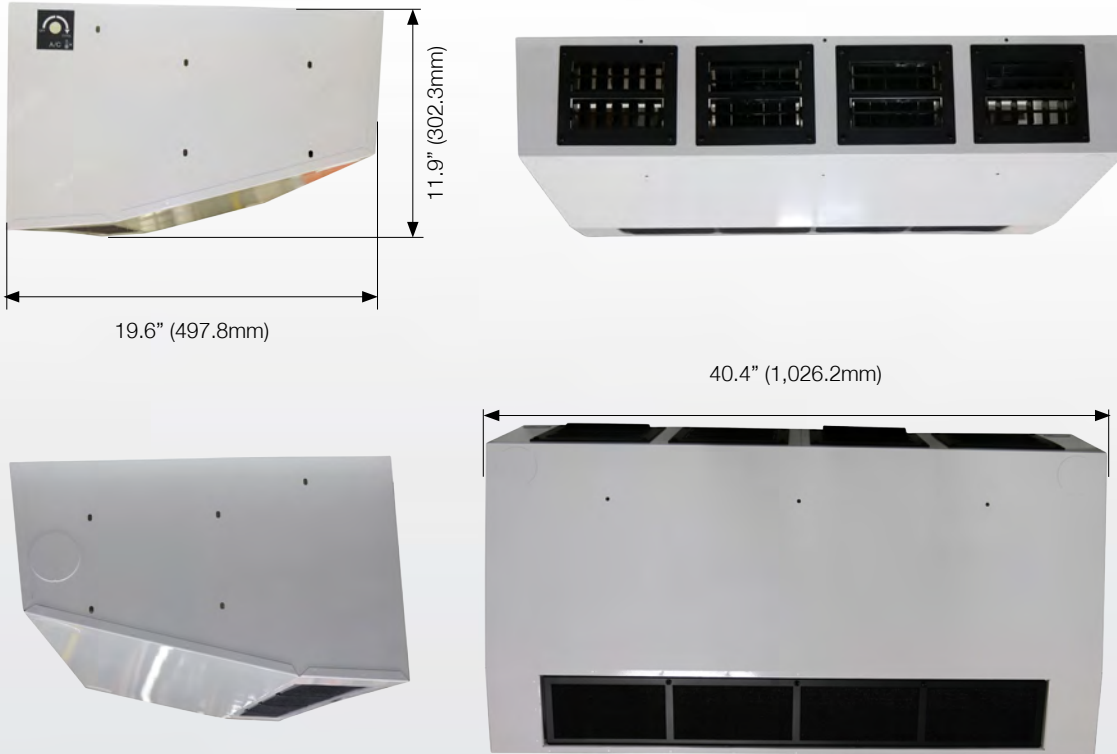
Technical Specifications

Model	KA-7300 12V
Voltage	12V
Power	75,408 BTU/hr (22,1 kW)
Amps	15 A/h - 30 A/h
Maximum air flow	940 SCFM (1597 m ³ /hr)
Dimensions (L x W x H)	40.4in x 20.2in x 11.9in (1026.2mm x 513mm x 302.3mm)
Weight	68 lbs. (30,8 kg)
Mounting Position	Headliner

Measurements are listed using the U.S. system with the metric system in parenthesis.

Recommended Remote Condenser: KC-900 (page 95)

Dimensions layout



Advantages

- Operator Comfort
- Perfect match for your vehicle
- Best Value
- Very durable structure

KA-7300 Order Guide

Part	Part Number	Notes
Unit Part Number	BSP00038AC12	12V
Blower Motor	1075018	12V
Resistor	2099006	12V
Thermostat	2375001	12V
Evaporator	1675020	12V
Filter	3475020	12V
Expansion Valve	1817001	12V
Wiring Kit	3475060	
Universal Hose Kit	3475087	



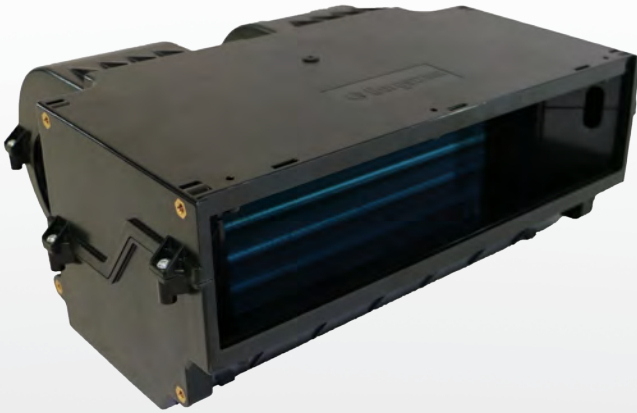
2390 Blackhawk Rd.
 PO Box 6007
 Rockford, IL 61125
 866.507.9773
 bergstrominc.com

Warranty

- 2-year limited warranty on parts and systems

Features

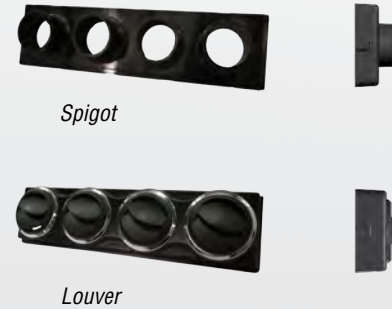
- Shell constructed with durable molded plastic
- Integrated single twin scroll blower
- 4 air outlets (spigot/louwer)
- 3 fan speeds



Suggested Applications

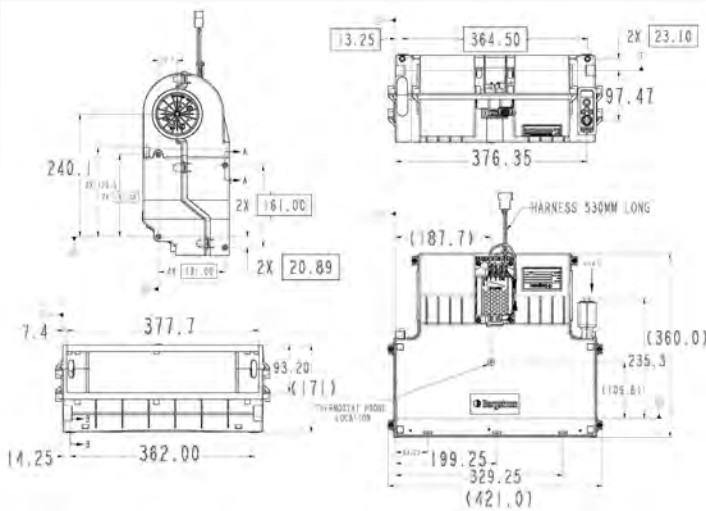


Air Distribution Panel



See other available panel options page 116

Line Drawing



Technical Specifications

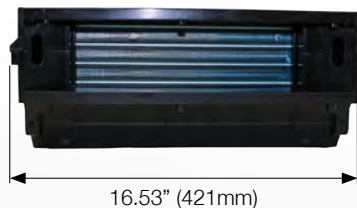
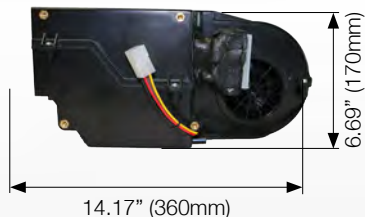
Model	Kelvin 12V	Kelvin 24V
Voltage	12V	24V
Power	20,810 BTU/hr (6,1 kW)	20,810 BTU/hr (6,1 kW)
Amps	21.6 A/h	11 A/h
Maximum air flow	460 SCFM (780 m ³ /hr)	460 SCFM (780 m ³ /hr)
Dimensions (L x W x H)	14.71in x 16.53in x 6.69in (360mm x 421mm x 170mm)	14.71in x 16.53in x 6.69in (360mm x 421mm x 170mm)
Weight	14.3 lbs. (6,5 kg)	14.3 lbs. (6,5 kg)
Mounting Position	Horizontal (Floor or Headliner)	Horizontal (Floor or Headliner)

(*) System output (BTU/hr) is based on system component-calculated capacities in accordance with ISO1515 standard test conditions: outside temperature 100°F (38°C), humidity 40%.

Measurements are listed using the U.S. system with the metric system in parenthesis.

Recommended Remote Condenser: KC-110 (page 85) or KC-750 24V (page 91)

Dimensions layout



Advantages

- Operator Comfort
- Perfect match for your vehicle
- Best Value
- Very durable structure
- Virtually maintenance free
- Powerful electric compressor unit

Kelvin A/C Order Guide

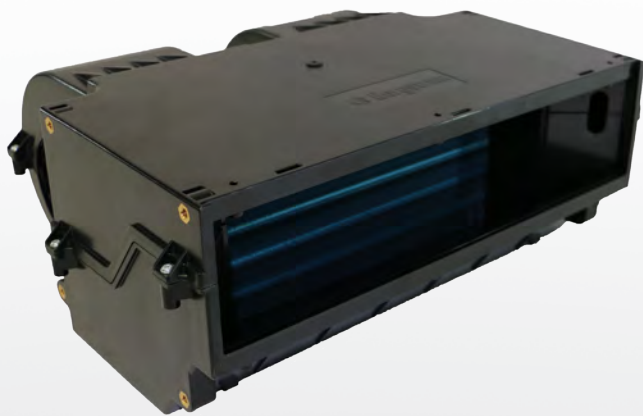
Part	Part Number	Notes
Unit Part Number	BSP00026AC12 BSP00026AC24	12V 24V
Blower Motor	1000757353 1000796197	12V 24V
Resistor	2099027 2099027	12V 24V
Evaporator	1000750666 1000750666	12V 24V
Expansion Valve	0990013359 0990013359	12V 24V
Attaching Actuator Screws	1000204696 1000204696	12V 24V
Actuator	1000593041 1000593041	12V 24V
Water Valve	1000651116 1000651116	12V 24V



2390 Blackhawk Rd.
PO Box 6007
Rockford, IL 61125
866.507.9773
bergstrominc.com

Warranty

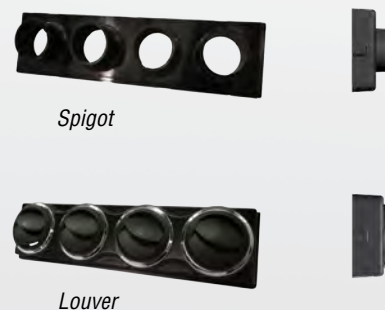
- 2-year limited warranty on parts and systems



Features

- Shell constructed with durable molded plastic
- Double wheel high performance blower
- 4 air outlets (spigot/louver)
- 4 fan speeds

Air Distribution Panel

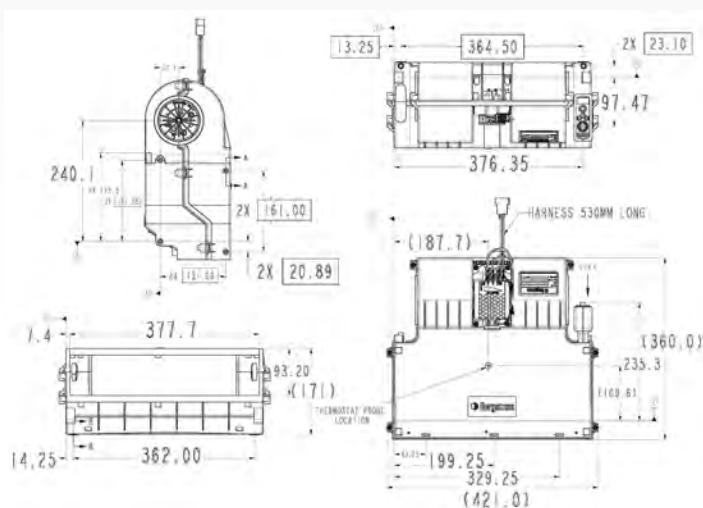


Suggested Applications



See other available panel options page 116.

Line Drawing



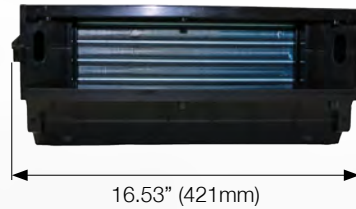
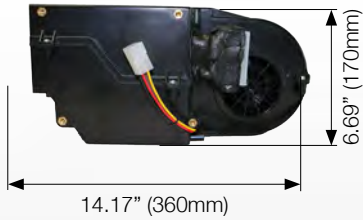
Technical Specifications

Model	Kelvin 12V	Kelvin 24V
Voltage	12V	24V
Power	Cold: 20,810 BTU/hr (6,1 kW) Hot: 32,410 BTU/hr (9,6 kW)	Cold: 20,810 BTU/hr (6,1 kW) Hot: 32,410 BTU/hr (9,6 kW)
Amps	20 A/h	10.5 A/h
Maximum air flow	410 SCFM (650 m ³ /hr)	410 SCFM (650 m ³ /hr)
Dimensions (W x H x D)	14.71in x 16.53in x 6.69in (360mm x 421mm x 170mm)	14.71in x 16.53in x 6.69in (360mm x 421mm x 170mm)
Weight	13.9 lbs. (6.5 kg)	13.9 lbs. (6.5 kg)
Mounting Position	Horizontal (Floor or Headliner)	Horizontal (Floor or Headliner)

Measurements are listed using the U.S. system with the metric system in parenthesis.

Recommended Remote Condenser: KC-110 (page 85), KC-440 (page 87) or KC-750 24V (page 91)

Dimensions layout



Advantages

- Operator Comfort
- Perfect match for your vehicle
- Best Value
- Very durable structure
- Virtually maintenance free
- Powerful electric compressor unit

Kelvin HVAC Order Guide

Part	Part Number	Notes
Unit Part Number	BSP00014HVAC12 BSP00014HVAC24	12V 24V
Blower Motor	1000757353 1000796197	12V 24V
Resistor	2099027 2099027	12V 24V
Evaporator	1000750666 1000750666	12V 24V
Heater Coil	1000960129 1000960129	12V 24V
Water Valve		12V 24V
Expansion Valve	0990013359 0990013359	12V 24V



2390 Blackhawk Rd.
PO Box 6007
Rockford, IL 61125
866.507.9773
bergstrominc.com

Warranty

- 2-year limited warranty on parts and systems



Features

- Shell constructed with durable molded plastic
- Integrated single twin scroll blowers
- 3 air outlets (spigot/louver)
- 3 fan speeds

Suggested Applications

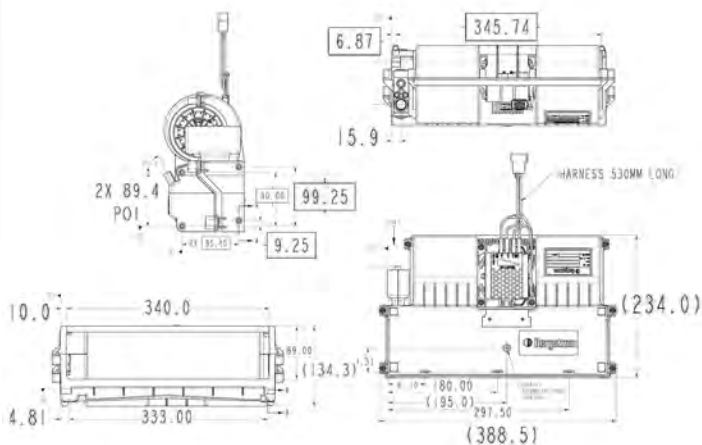


Air Distribution Panel



See other available panel options on page 116

Line Drawing



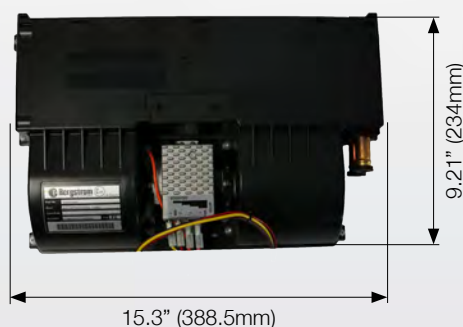
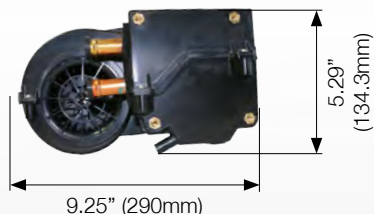
Technical Specifications

Model	Pascal 12V	Pascal 24V
Voltage	12V	24V
Power	13,650 BTU/hr (4,0 kW)	13,650 BTU/hr (4,0 kW)
Amps	7.8 A/h	4.5 A/h
Maximum air flow	265 SCFM (450 m ³ /hr)	265 SCFM (450 m ³ /hr)
Dimensions (L x W x H)	9.21in x 15.3in x 5.29in (234mm x 388.5mm x 134.3mm)	9.21in x 15.3in x 5.29in (234mm x 388.5mm x 134.3mm)
Weight	8.4 lbs. (3,8 kg)	8.4 lbs. (3,8 kg)
Mounting Position	Horizontal (Floor or Headliner)	Horizontal (Floor or Headliner)
Tube Connection	(2) 5/8" O.D.	(2) 5/8" O.D.

Measurements are listed using the U.S. system with the metric system in parenthesis.

Recommended Remote Condensers: KC-90 (page 83), KC-500 (page 89) or KC-750 24V (page 91)

Dimensions layout



Advantages

- Operator Comfort
- Perfect match for your vehicle
- Best Value
- Very durable structure
- Virtually maintenance free

Pascal A/C Order Guide

Part	Part Number	Notes
Unit Part Number	BSP00025AC12 BSP00025AC24	12V 24V
Blower Motor	1000777603 1000783637	12V 24V
Resistor	2099027 2099027	12V 24V
Evaporator	1000763896 1000763896	12V 24V
Expansion Valve	0990013359 0990013359	12V 24V
Attaching actuator screws	1000240696 1000240696	12V 24V
Actuator	1000593041 1000593041	12V 24V
Water Valve	1000651116 1000651116	12V 24V



2390 Blackhawk Rd.
PO Box 6007
Rockford, IL 61125
866.507.9773
bergstrominc.com

Warranty

- 2-year limited warranty on parts and systems